

# Multiple aspect trajectories: a case study on fishing vessels in the Northern Adriatic sea

Giulia Rovinelli<sup>1</sup>, Stan Matwin<sup>2</sup>, Fabio Pranovi<sup>1</sup>, Elisabetta Russo<sup>1</sup>, Claudio Silvestri<sup>1</sup>, Marta Simeoni<sup>1</sup>,  
**Alessandra Raffaetà<sup>1</sup>**

<sup>1</sup>Dipartimento di Scienze Ambientali, Informatica e Statistica,  
Università Ca' Foscari, Venezia, Italy

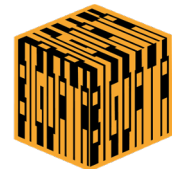
<sup>2</sup>Institute for Big Data Analytics, Dalhousie University, Halifax, Canada



Ca' Foscari  
University  
of Venice



DALHOUSIE  
UNIVERSITY  
*Inspiring Minds*



# Outline

---

- Scenario & Motivations:

  - Fishing in the Mediterranean Sea

- Framework at a glance

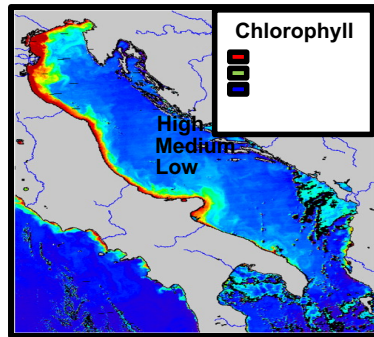
  - Datasets & Trajectory reconstruction and enrichment

- Analyses & results

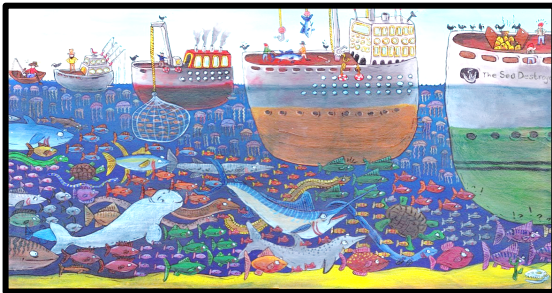
- Future work

# Scenario

The most **productive** area of the Mediterranean sea

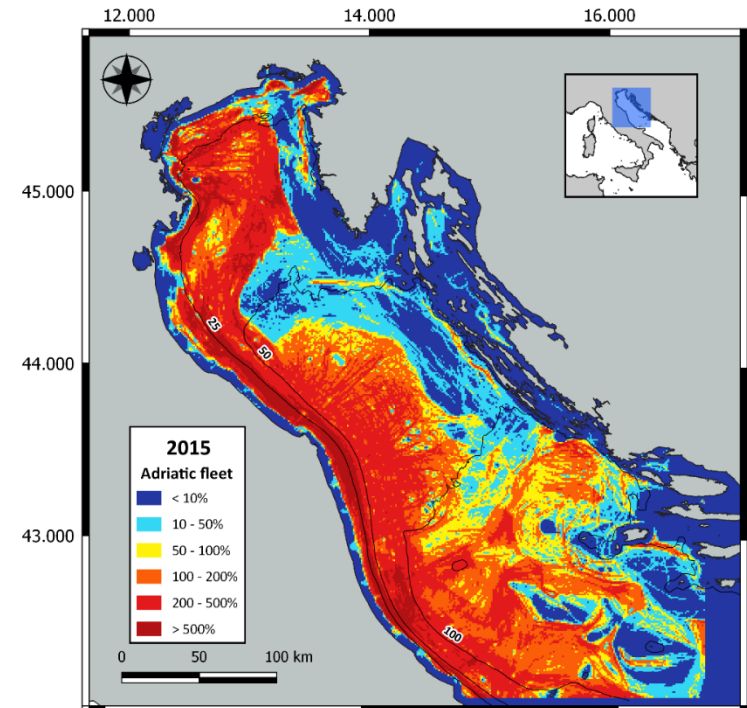


One of the most **intensively fished** area in Europe



Multispecific & Multigear Fisheries

Very high fishing pressure



Northern and Central Adriatic Sea is **Overexploited**

# Goals and contributions

---

- Development of **effective fishery management** plans to reduce unsustainability of exploitation and ensure a productive and healthy ecosystem.
- Improve the **knowledge of the spatio-temporal aspects** of the fishing activities in the Northern and Central Adriatic Sea.
  - ❖ Detecting the fishing grounds and their seasonal and annual variation
  - ❖ Spatial and temporal distribution of the main species
  - ❖ Checking the AIS coverage and its reliability
- Use of **MobilityDB** to create and analyse semantic trajectories.

# Framework at a glance

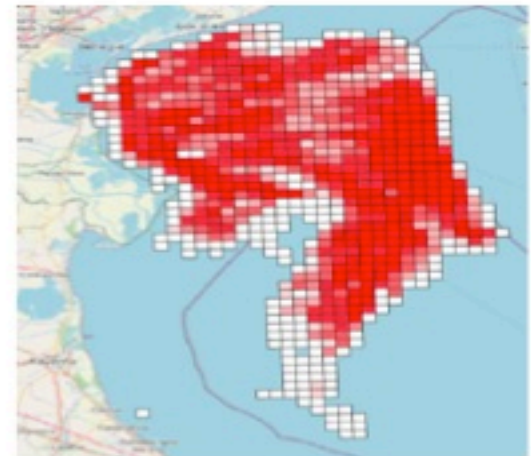
Landing data



trajectory  
reconstruction and  
enrichment



Data analysis



# Datasets

## AIS: Automatic Identification System

### STATIC INFORMATION

- MMSI: Identification Number
- Name
- Call Sign (IRCS)
- Length
- Type Of Ship

### DYNAMIC INFORMATION

- Ship's Position
- Time (UTC)
- Course Over Ground

Daily **landing** reports: Amount of fish sold at the Chioggia Fish Market

### STATIC INFORMATION

- MMSI: Identification Number
- Date
- Species Id
- Quantity in kg



Collected by the local radio antennas

# Trajectory reconstruction from AIS data

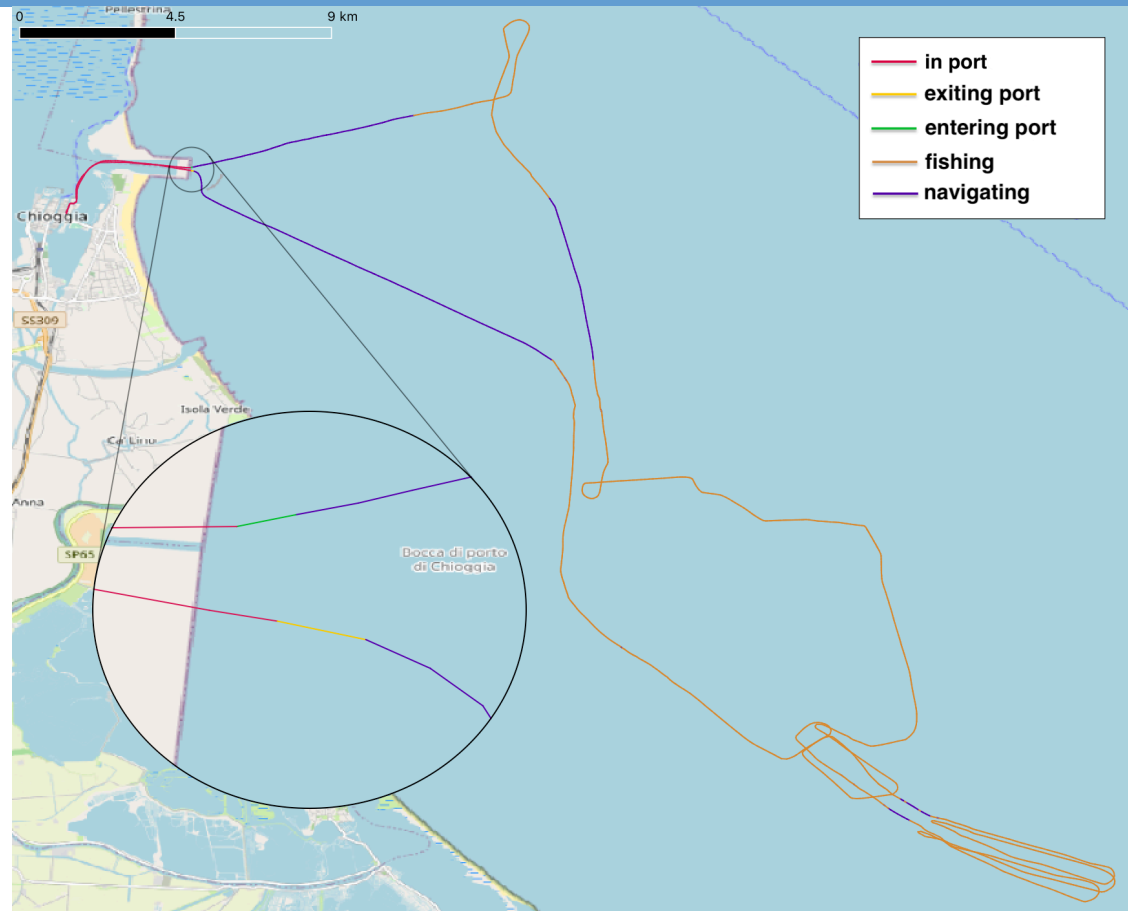
- ❖ Four years data (2015-18)
- ❖ The movement of the vessels is reconstructed by **linear interpolation**.
- ❖ It is split into **trajectories** (trips) relying on various criteria
  - e.g., a trip ends when a vessel is in the port without any transmission for a period longer than a fixed time
- ❖ And each trajectory is **annotated** ...
  - ❖ **Long-term aspects** associated with the whole trajectory
    - e.g., MMSI, fishing gear, anomaly detection
  - ❖ **Volatile aspects** associated with trajectory segments
    - e.g. speed, activity, transmission, position with respect to the port.

**Multiple aspect trajectories**  
[Bogorny et al.]

# Examples of Annotations

- **Anomaly** (long-term):
  - (0) normal trip
  - (1) no transmission for more than 30 minutes outside a port area
  - (2) trip always inside a port area
  - (3) trip duration over 24 hours

- **Activity** (volatile)
  - (0): in port
  - (1): exiting from port
  - (2): entering to port
  - (3): fishing
  - (4): navigating





# Catch distribution

## ➤ Uniform Distribution:

$$d_U(s, sp) = \frac{s.len}{tr.len\_fishing} * catch.sp$$

where  $s$  is a segment of  $tr$  and  $sp$  is a species.

## ➤ Weighted Distribution:

$$d_W(s, sp) = \frac{\alpha(s.cell, sp) * s.len}{\sum_{s' \in tr \wedge s'.activity=fishing} (\alpha(s'.cell, sp) * s'.len)} * catch.sp$$

where  $\alpha$  is the fishing coefficient associated with a grid cell (3x3 km<sup>2</sup>)

$$\alpha(c, sp) = |\{tr \in T \downarrow sp \mid tr \cap c \neq \emptyset\}| * \sum_{tr \in T \downarrow sp} \sum_{s \in tr \cap c \wedge s.activity=fishing} s.len$$

# MobilityDB & QGIS

---

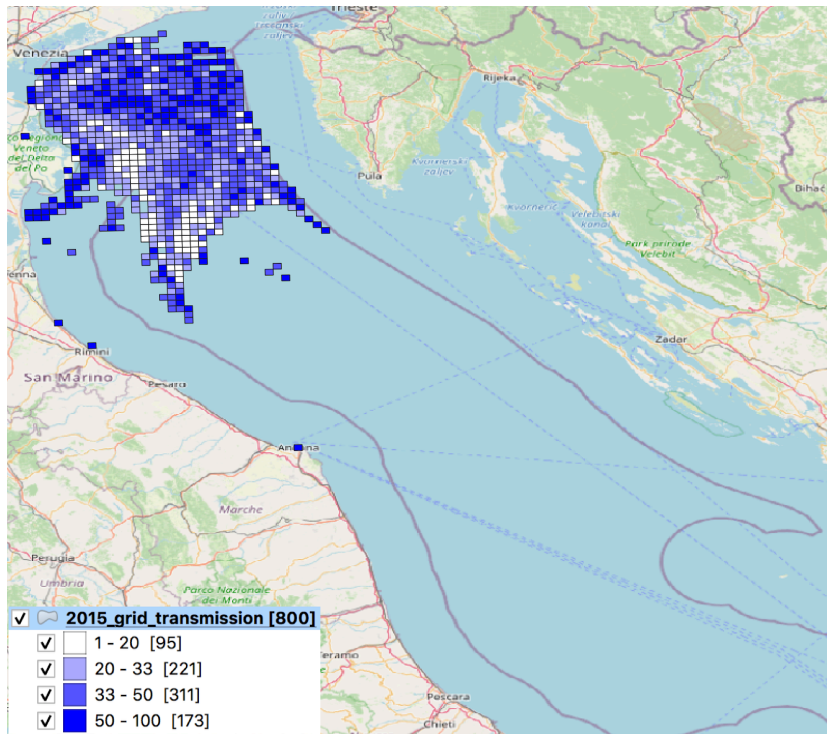
**MobilityDB**: Open source extension to PostgreSQL and PostGIS

- ❖ Temporal types and spatio-temporal operators to manage moving objects.
- ❖ Creation of objects of type `tgeompoint`
  - ➔ linear interpolation is implemented by the system
- ❖ Representation of multiple aspect trajectories
  - ➔ possibility to annotate the whole trajectory or single segment composing the trajectory

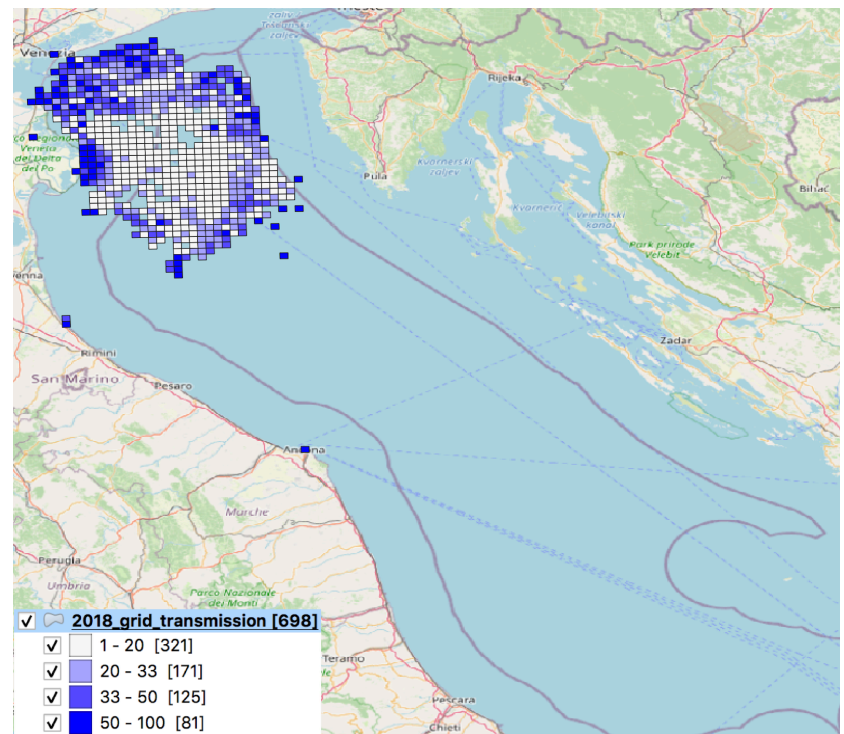
**QGIS**: Open Source GIS to support viewing, editing and analysis of geospatial data.

# Spatial coverage of AIS

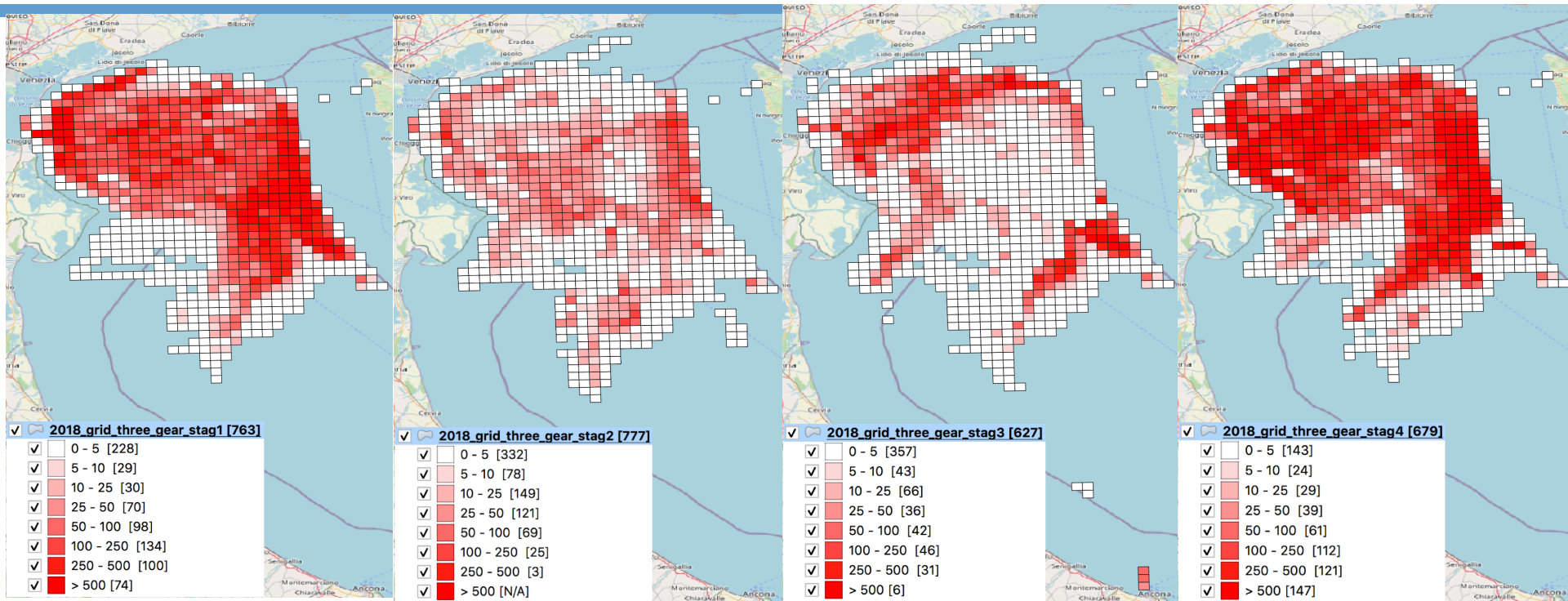
In 2015 almost the whole fishing zone suffers from lack of transmission over 50%



In 2018 the phenomenon is reduced and located close to the coast and along the territorial water borders



# Seasonal Variation of fishing grounds



Winter 2018

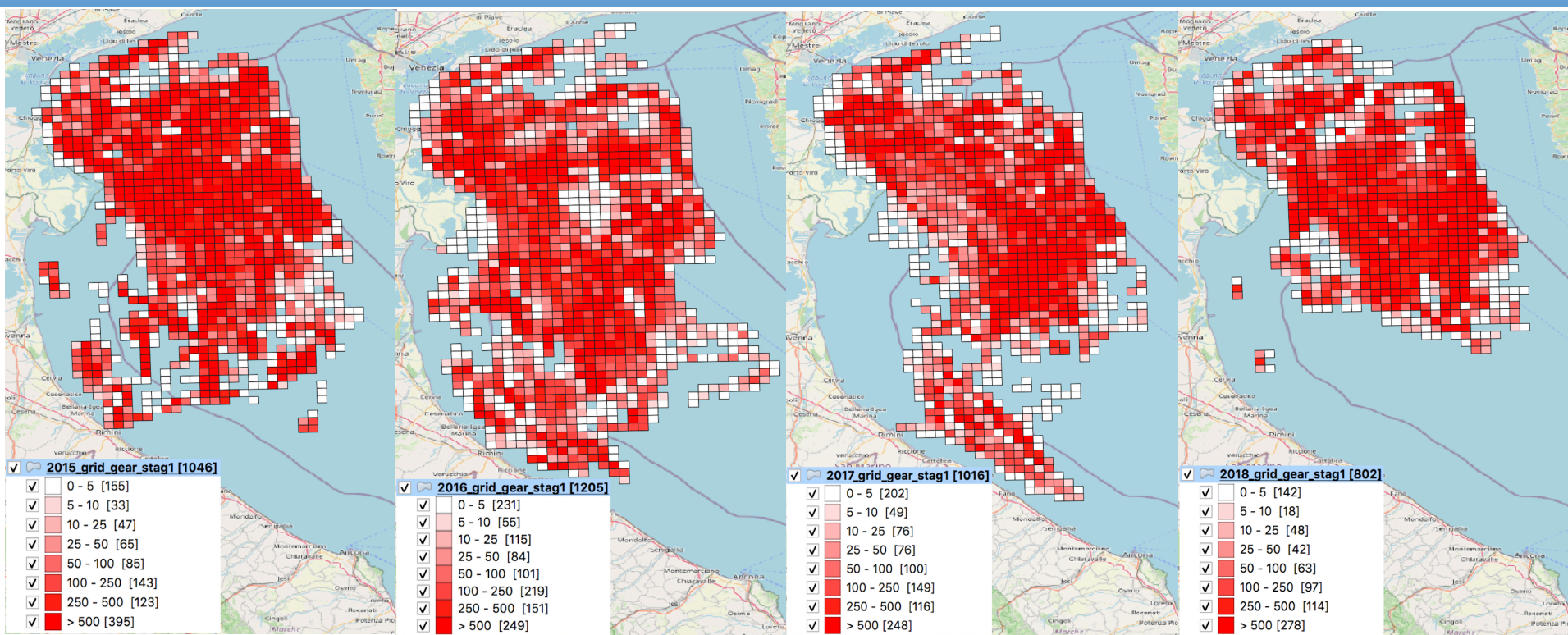
Spring 2018

Summer 2018

Autumn 2018

**Sepia Officinalis**

# Fishing ground variation along the years



2015

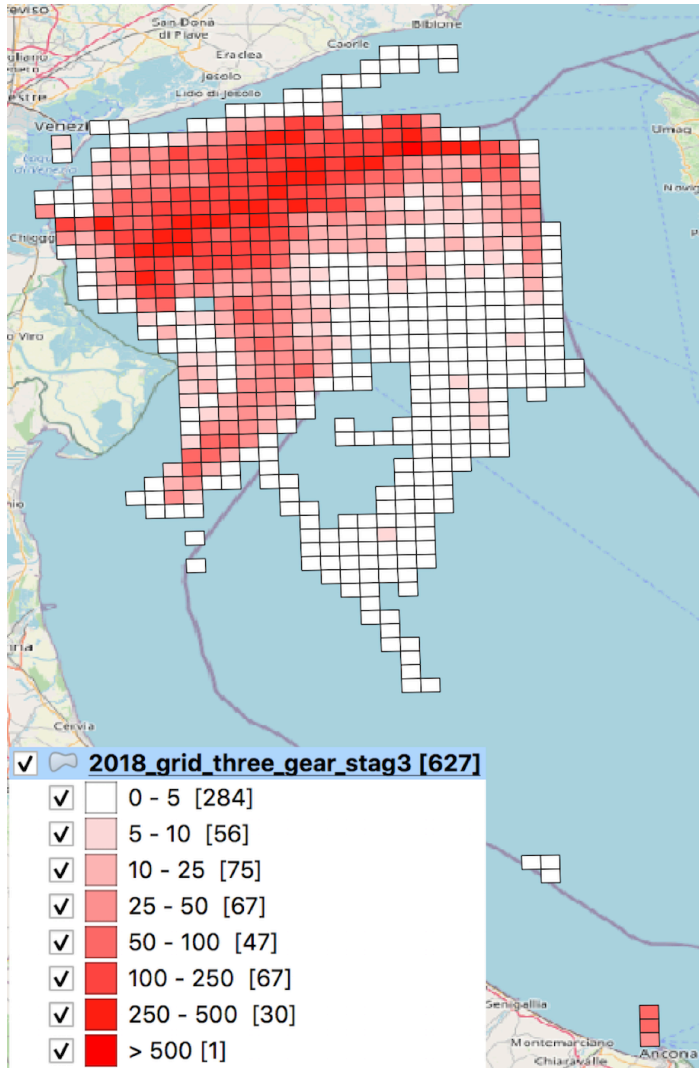
2016

2017

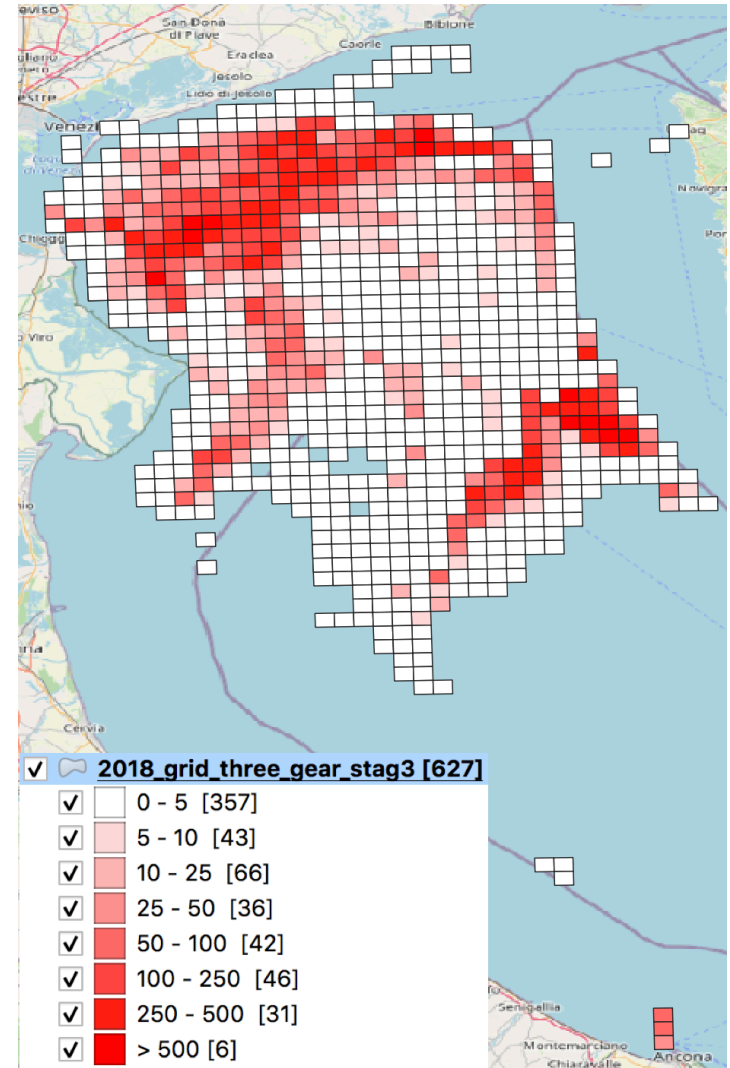
2018

**Engraulis encrasicolus**

# Uniform vs Weighted Distributions



Uniform Distribution



Weighted Distribution

# Future work

---

- Predict the distribution of the fishing effort and the relative catches.
- Detect recurrent fishing patterns and anomaly behaviours.
- Investigate the impact of COVID19 on the fishing activities.